



## **Nelly EVO Turbo**

### **Assembly Guide**

Revised: 03/04/2006

Copyright 2005, 2006  
[www.woahnelly.com](http://www.woahnelly.com)

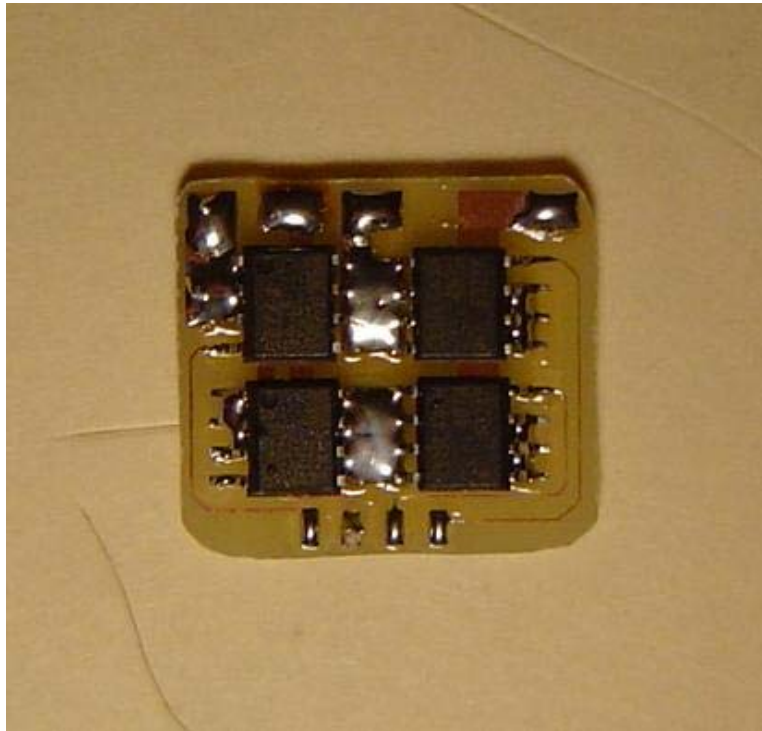
This is just a quick overview on how to assemble the Nelly EVO turbo if you purchased it in Kit form.

The contents of the Nelly EVO kit are:

- Nelly EVO PCB, pre-soldered , MOSFETS installed.
- 1 Red and 1 Black power wire.
- 2 White motor wires.
- 4 core, rainbow signal wire.
- Piece of clear heat shrink.

This guide shows you where and how to connect the wires to the Nelly EVO PCB.

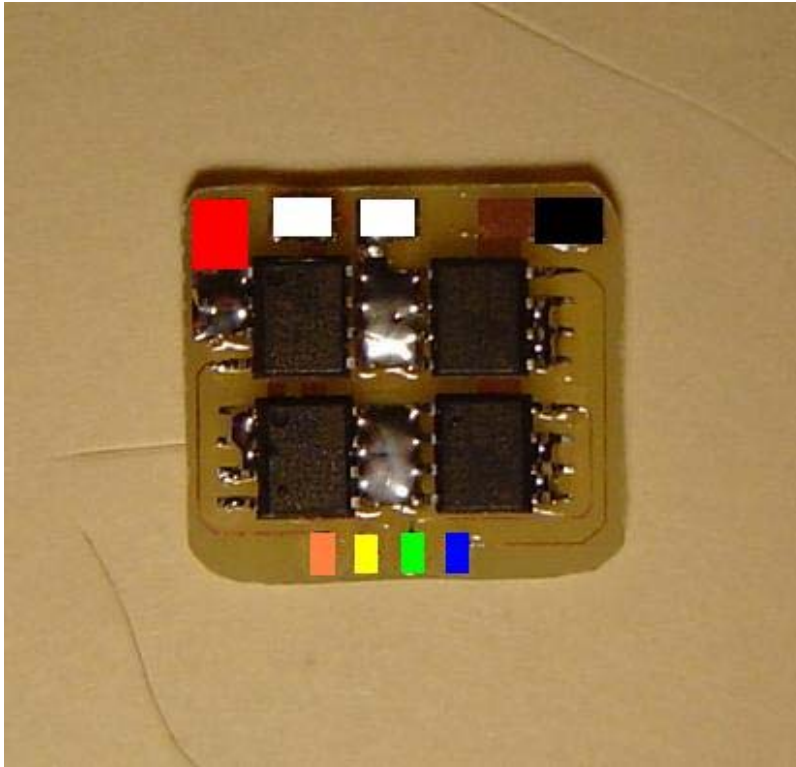
1) Layout the Nelly EVO PCB like this, with the 4 small solder pads at the bottom.



2) Pre-tin the wires so they can be soldered onto the PCB. To pre-tin a wire, all you need to do is cut some of the insulation off, twist the wire into a neat spiral and then melt some solder onto the wire.

Once you have done that, it is easier to solder onto the Nelly EVO pcb since both joints now have solder on them. (The Nelly EVO comes with it's circuit pad pre-soldered, ready to go.)

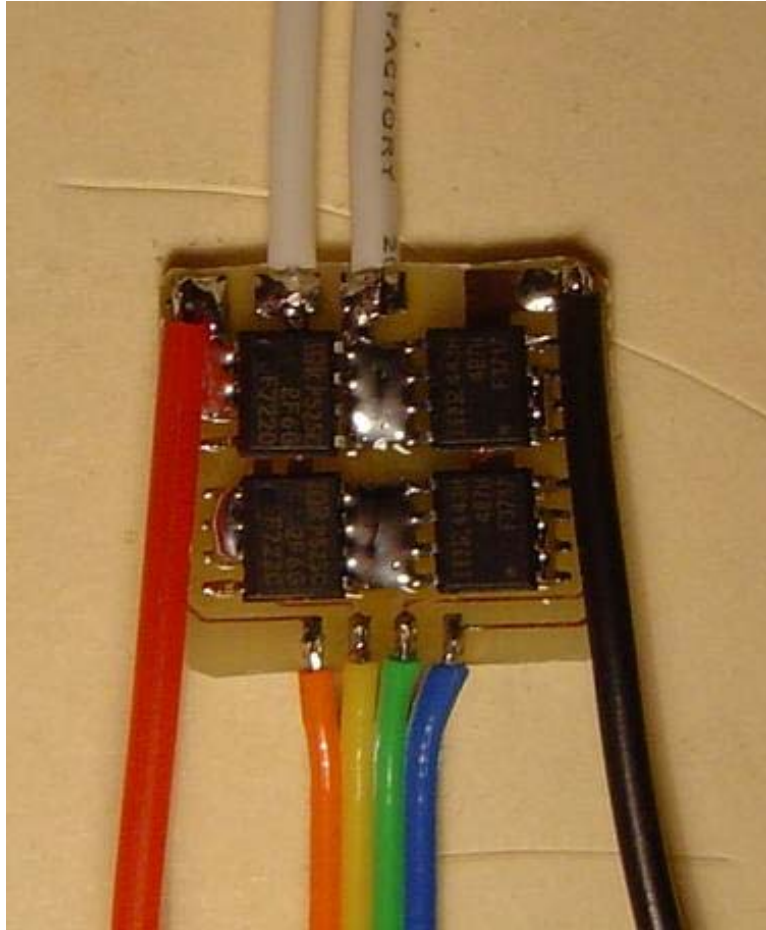
3) Solder the wires to the following points.



- The Red and Black silicon power wires go to the top left and top right pads respectively.
- The White silicon motor wires go to the top middle pads, as shown above.
- The 4 signal wires are soldered to the smaller 4 pads at the bottom of the PCB layout.

***Please note that you MUST solder the colors to the correct pads since this is critical for correct operation.***

4) Once you have completed soldering the wires on your Nelly EVO should look like this:



Once all the wires are on OK now place the clear heat shrink over the Nelly EVO PCB and use a lighter or hot air gun or other heat source to shrink the clear tube over the Nelly EVO PCB. Do not expose Nelly to an open flame for more than a second at a time! Just use enough heat to shrink the tubing appropriately.

All Done!

Now proceed with the Nelly EVO Installation Guide to install your Turbo.

Cheers,  
ph2t.

[www.woahnelly.com](http://www.woahnelly.com)